

The Cellkraft F-series humidifier is suitable for high flow rate. The F-Series humidifies the airflow by injecting evaporated water. This technology gives the opportunity to humidify high flows of gas with high precision, quick response and low pressure drop.

Advantages

- Compact
- Fully automatic
- Maintenance free
- Suitable for air, oxygen, hydrogen and other gases.



Industrial version

- SS 304 enclosure
- IP 65
- ATEX/IEC zone 1/2
- GMP



Capacity

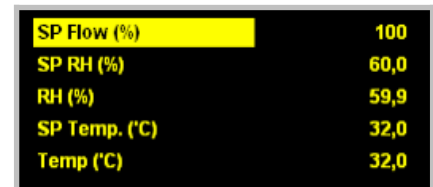
Model	F-250	F-500	F-1000
Flow (l/min)	Max 250	Max 500	Max 1000
Humidity	-20...140 °C Tdew 0...(95) 100 % RH		
Temperature	20...400 °C		
Pressure	0...15 bar(a)		

Applications

- Climate chambers
- Environmental simulation
- Fuel Cell testing
- Semiconductor industry
- Tube furnaces
- Chamber furnaces
- Testing laboratories
- Pharmaceutical industry
- Humidity control of vacuum dryers

Display

The front panel display will give all information about the produced gas flow. The F-Series can control the humidity and optionally: flow rate, temperature, pressure and gas composition.



Remote control and monitoring

The unit can be controlled and monitored remotely by the software that is included.

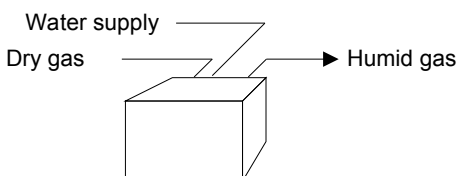
(The graph shows the setpoint change of temperature and humidity.)



Technology

- Injection technology for high capacity and fast response
- Precision pump for water vapour control
- Individual control of humidity, temperature (optional) and flow rate (optional).
- CE-compliance

Principle



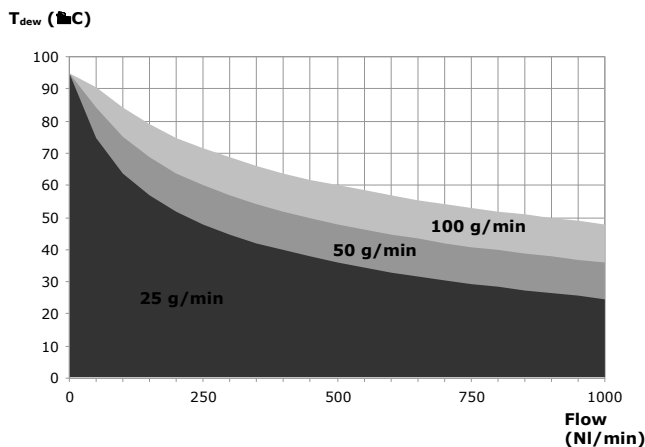
Technical data

	F-250	F-500	F-1000
Flow			
Capacity*	0 (5)...250 l/min	0 (10)...500 l/min	0 (20)...1000 l/min
Flow accuracy (flow control option)	± 0.5 % reading ± 0.1 % of full scale		
Humidity			
Capacity	-20...140 °C Tdew (0...(95) 100 % RH)**		
Sensor accuracy	± (1.5 + 0.015 × reading) %RH		
Temperature			
Capacity (temp control option)	25...400 °C		
Accuracy at +20° C	±0.2 °C		
Pressure			
Pressure range	1...6 bar(a) or free def. between 0 (vacuum)...15 bar(a)		
Pressure drop	150 mbar	200 mbar	250 mbar
Pressure drop (option flow control)	2000 mbar		
Liquid supply			
Water quality	Deionised or distilled (max 10µS / cm)		
Pressure of inlet water	Water tank 1...5 m higher than unit.		
Pressure of inlet water (optional)	1...3 bar(g) pressurised supply		
General			
Power	1500-7500 W depending on configuration		
Ambient temperature in use/storage	+5... +30 °C / 40... +60 °C		
Wetted materials	Nafion®, PTFE, Stainless steel		
Certification	CE certified		
Mechanical			
Standard laboratory enclosure (WxHxD)	2281x471x511 mm	281x471x511 mm	281x471x511 mm
Weight	16 kg	23 kg	25 kg
Industrial enclosure (WxHxD)	760x760x300 mm, weight 80 kg		
Interface			
Voltage	208-230 V, 50-60 Hz single phase or 208; 400; 480 V, 50-60 Hz three-phase depending on configuration		
Remote control digital	Modbus TCP Open source Java-based software included.		
Remote control digital (optional)	RS 232 / RS 485 Modbus RTU		
Remote control analogue (optional)	4...20 mA		
Liquid inlet	6 mm or 1/4" compression fitting Swagelok®		
Air inlet/outlet	12 mm or 1/2" Swagelok® 18 mm or 3/4" Swagelok® 25 mm or 1" Swagelok®		

* Operation below 50 nlpm may give unstable humidity output.

** Lower limit depends on inlet gas humidity. Operation in the range 95-100 % RH can lead to condensation.

Capacity

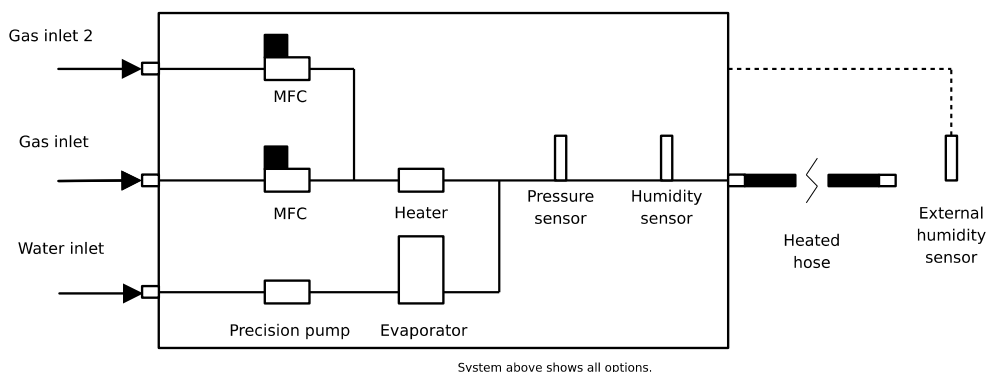


Technical principle

The F-Series humidifier creates a humidified air flow by injecting a precise flow of water vapour into the air flow. The technology gives extremely dynamic and transient performance. Humidity can be adjusted from 0-100% in a few seconds.

The capacity graph gives information on max available dewpoint as a function of flow and steam capacity.

Control functions and options



Flow

The humidifier can be equipped with an internal mass flow controller. This allows the user to control the flow rate from the front panel. This option requires that gas supply with some overpressure (typical min 2 bar) is available.

Pressure

The unit can be configured to monitor the gas pressure or even to set the pressure. Pressure control is effectuated by controlling the flow rate in order to keep the pressure at the set value.

Humidity

Closed loop control of humidity based on a signal from a humidity sensor will ensure accurate control of humidity. The setpoint and the actual value of humidity are presented on the front panel. Humidity can be expressed as relative humidity (% RH), dew point (°C) or partial pressure (mbar).

Temperature

An integrated internal heater will allow the user to set the temperature of the humidified gas. In this way the humidity and temperature can be set independently.

Concentration

Optionally the unit can be equipped with parallel flow control for several gases. In this way accurate concentration control can be achieved. Typical application is varying of the Oxygen concentration in the process gas.

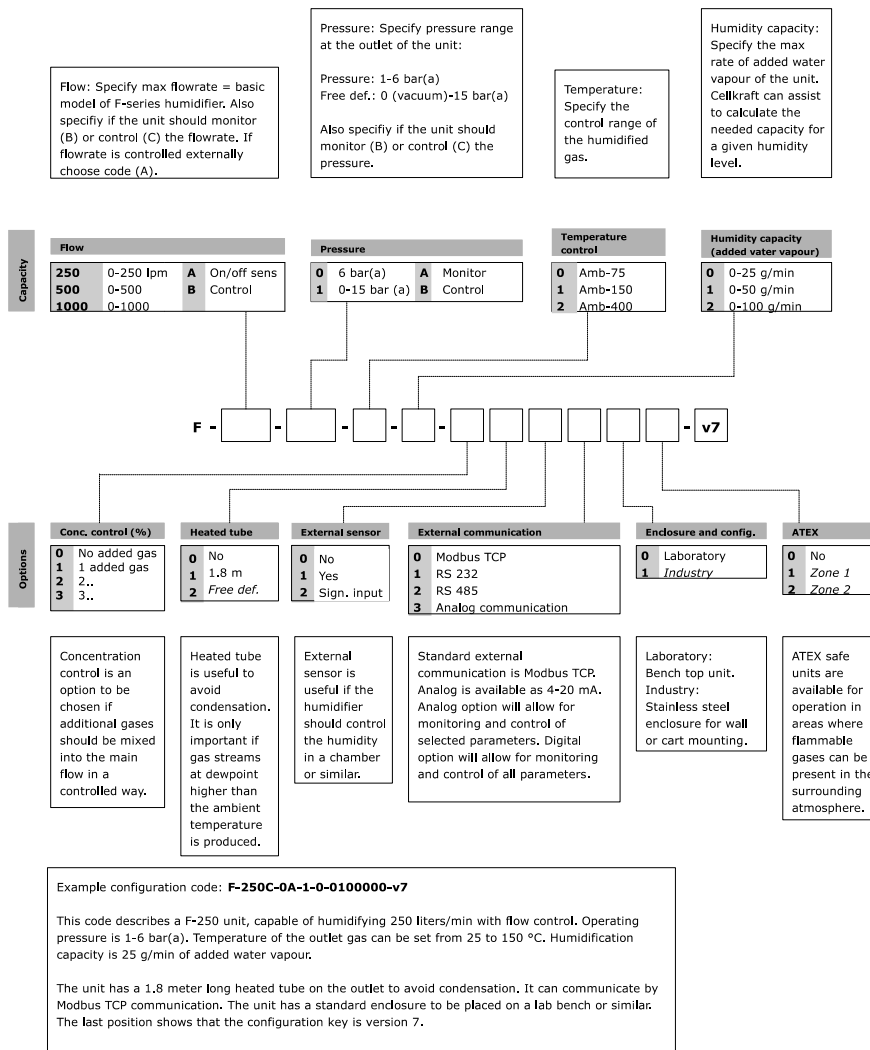
Heated output tube

A heated flexible tube for the output gas facilitates condensation free transfer of the humid gas from the humidifier. The temperature of the output tube is controlled from the front panel in the range 20 to 180 °C.

Explosion proof versions

Explosion proof versions for ATEX zone 2 and zone 1 are available. Contact Cellkraft for more information.

Product configuration code



Contact

Anders Ocklind
+46 8 673 19 14
anders.ocklind@cellkraft.se

Joakim Nordlund
+46 8 673 19 15
joakim.nordlund@cellkraft.se

Cellkraft AB
Lilla Frescativägen 4A
SE-114 18 Stockholm
Sweden

www.cellkraft.se